

GEHL

ARTICULATED LOADERS

AL550 | AL650 | AL750 | ALT750 | ALT950



GEHL[®]
WORKS LIKE YOU[™]



**BORN ON AN
AMERICAN FARM
IN 1859.**

GEHL[®]
WORKS LIKE YOU[™]

Starting in 1859 GEHL has been rooted in agriculture. Designing and building machines to help America's hardest workers. Many years later, we are offering products world-wide that work just as hard as the farmers and construction workers who own and operate them.

We build machines that make life easier and exceed expectations. Here at GEHL, we know that true satisfaction isn't felt while earth-moving but looking back at a job well-done. That is the true payoff for our operators and built in our DNA at GEHL.

For over 160 years we have been partnering with farmers, construction workers, landscapers and rental companies – large and small – to help move mountains and build a strong foundation of trust. **We care about our operators.** Safety and efficiency go into every machine we produce to help hardworking people get home safe and hopefully even a little bit early. ■

The true payoff comes in a job well-done.



GEHL

**RAISED ON
A GLOBAL
JOB SITE.**

We have always designed and built machines to help the needs of the people who change our landscape. Over time, regulations and the needs of these workers change. GEHL continues to innovate and change with them to supply the most robust, durable machines on the market.

Humble and hardworking people, responsible for molding and changing the world around us are not overlooked by our brand. With that in mind, GEHL has contributed heavily to the construction industry and is dedicated to continue for many years to come.

GEHL has invested significantly into the future of our products and will continue to change and meet the requirements of urban job sites. Driven by the voice of our customers and industry data we are committed to be here to design, build, service and stand behind our products. We will help you do the heavy lifting.

As the global landscape changes we stay on track supplying machines that are reliable and meet or exceed emissions standards for the future of our planet and our young operators of tomorrow. ■

ARTICULATED LOADERS



AL550

Maximum Height of Bucket Pivot Point
- 10'4" | 3.16m
Static Tipping Load Full Turn with Bucket
- 3,732lbs | 1693 kg
Loader Arm Style - Z-Bar

CUSTOMER BENEFITS

Z-Bar Loader Arm
H - 7'7" / W - 4'10" / L - 13'9"
Smallest Z-Bar Loader
Hydrostatic Transmission



AL650

Maximum Height of Bucket Pivot Point
- 10'11" | 3.3m
Static Tipping Load Full Turn with Bucket
- 5,245lbs | 2379kg
Loader Arm Style - Z-Bar

CUSTOMER BENEFITS

Z-Bar Loader Arm
H - 8'2" / W - 5'7" / L - 14'1"
Compact with Great Reach
Hydrostatic Transmission



AL750

Maximum Height of Bucket Pivot Point
- 11'5" | 3.5m
Static Tipping Load Full Turn with Bucket
- 6,127lbs | 2779kg
Loader Arm Style - Z-Bar

CUSTOMER BENEFITS

Largest Z-Bar Loader
H - 8'2" / W - 5'11" / L - 14'2"
Heavy-Duty Axles
Hydrostatic Transmission



ALT750

Maximum Lifting Height Below Forks
- 15'11" | 4.85m
Static Tipping Load with Bucket Full Turn
- 4,012lbs | 1820kg
Loader Arm Style - Telescopic

CUSTOMER BENEFITS

Compact Telescopic Loader
Maximum Lifting Height of 4.9m
H - 8'2" / W - 6'7" / L - 18'8"
Hydrostatic Transmission



ALT950

Maximum Lifting Height Below Forks
- 17'1" | 5.21m
Static Tipping Load with Forks Full Turn
- 9,143lbs | 4147kg
Loader Arm Style - Telescopic

CUSTOMER BENEFITS

Largest Loader Offered
Maximum Lifting Height of 5.2m
H - 8'10" / W - 7'7" / L - 18'8"
CVT Transmission



REACHING NEW HEIGHTS

Articulation Locking Bar

Transport and lift with additional safety and stability.

Proportional Auxiliary Hydraulics

Standard equipment, activated with a rocker switch on the joystick. Detent and pressure relief are included to optimize attachment hook-up and performance.

Get Dirty in Comfort

A seven-way adjustable seat, multi-function joystick, fully adjustable steering column and cup holder are standard cab features.

Tight Turning Radius

Articulated steering speeds up cycle times and increase maneuverability in tight areas.

High-Impact Bucket Breakout

These machines offer some of the highest breakout forces in their respective classes, allowing you to fill the bucket to the max with each scoop, making you more productive.

Tool-Free Access

A lockable, self-opening hood allows access to the engine, hydraulic pumps, battery, fuse panels, fan motor and more.

Reversing Fan

Eject debris from the hydraulic and engine cooler, simply by pushing a button in the cab.

**Not standard on AL750*

Power-A-Tach®

The Power-A-Tach® hydraulic attachment system is standard equipment and features a skid steer interface to utilize some of the attachments you already own. Quickly transform your machine with the flexibility of Skid Steer, Euro Style and 4-Point Systems.

Front + Rear Locking Differentials

Conveniently located on the joystick, one button will activate four-wheel drive for maximum tractive effort.

Easy Entry

A low, non-slip step is essential for tasks requiring the operator to frequently enter and exit the machine.

Inching Pedal

With maximum precision speed control, maintain the full force needed to lift the load.



WHY AN ARTICULATED LOADER?

MANEUVERABILITY

Get the most out of your machine in any space. Articulation allows you to travel in between objects and in small areas, and reach loads in tight spaces. Increase your performance with the ability to lift loads at an angle and dump at new heights.

ALL-TERRAIN

Navigate the toughest terrain with features such as a standard differential lock that allows you to get as much torque and traction as you need. Use our inching pedal for precise placement of the machine and choose from a large variety of tires based on your needs and space on page 12.

Z-BAR OR TELESCOPIC?

Options available throughout our large Articulated Loader range can make the difference for efficiency and convenience on the job. Our Z-Bar loader arm is featured on the AL650 and AL750. Benefits of the Z-Bar loader arm include greater breakout force, as well as added visibility of the bucket and work in front of you. If you're after extra reach, Telescopic loader arms are what

you're looking for. Our ALT750 provides a maximum lifting height of 15'9", while the ALT950 has our highest reach of 17'1" meters. Reach loads into feeder wagons, box trucks and more with the added reach. Both Telescopic loaders have flow sharing hydraulics with combined movements and total control for the operator as a result.

CAB STRUCTURE OPTIONS AVAILABLE

*ALT950 only available in cab



OPEN ROPS



CLOSED CAB

THE GEHL STANDARD

ALL LARGE ARTICULATED LOADERS IN THE GEHL

LINEUP* COME STANDARD WITH A

HYDROSTATIC TRANSMISSION WITH DIFFERENTIAL LOCK.

3-SPEED TRANSMISSIONS ARE OPTIONAL.

*with the exception of ALT950's CVT Transmission

ATTACHMENTS - ONE MACHINE TO OPERATE AS MANY MACHINES



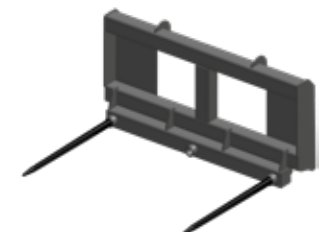
DOZER BLADE



LIGHT MATERIAL BUCKET



BROOM BUCKET



BALE SPIKE

TIRES + OVERALL WIDTH

Choose the tires that fit your working environment.

15.5/55-17 R-1

AL550 Overall Width - 58.7" (1492mm)

1

425/55R17 R-1

AL550 Overall Width - 60.2" (1530mm)

1

33x15.5-16.5

AL550 Overall Width - 56.5" (1435mm)

2

12-16.5

AL550 Overall Width - 50.9" (1292mm)

2

405/70-20*

AL650 Overall Width - 72.6" (1845mm) / 79.4" (2017mm)

3

AL750 Overall Width - 68.3" (1736mm) / 77" (1957mm)

ALT750 Overall Width - 68.3" (1736mm) / 77" (1957mm)

500/45-20*

AL650 Overall Width - 70.4" (1788mm) / 79.2" (2012mm)

4

AL750 Overall Width - 72.2" (1834mm) / 78.1" (1983mm)

ALT750 Overall Width - 72.2" (1834mm) / 78.1" (1983mm)

600/40-22.5

AL750 Overall Width - 79.6" (2022mm)

ALT750 Overall Width - 79.6" (2022mm)

4

460/70/R24

ALT950 Overall Width - 90.2" (2290mm)

5

500/70/R24

ALT950 Overall Width - 92.5" (2350mm)

*indicates multiple sizes for reversible rim options



**AGRICULTURAL
PROFILE**

*reference image, not exact

1



**SKID STEER
PROFILE**

2



**AGRICULTURAL /
INDUSTRIAL PROFILE**

3



**INDUSTRIAL
PROFILE**

3



**AGRICULTURAL
PROFILE**

4



**AGRICULTURAL
PROFILE**

5



**INDUSTRIAL
PROFILE**

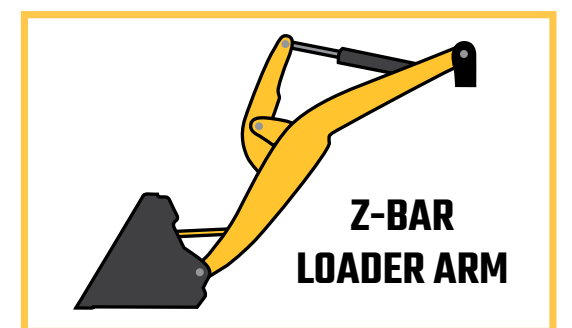
5





Capacities	Imperial	Metric
Static tipping load with bucket (straight)	4828 lb	2190 kg
Static tipping load with bucket (full turn)	3732 lb	1693 kg
Static tipping load with forks (straight)	3411 lb	1547 kg
Static tipping load with forks (full turn)	2654 lb	1204 kg
Max. height of bucket pivot point	10 ft 4 in	3.16 m
Reach at max. height	1 ft 5 in	0.43 m
Breakout force with bucket	4329.46 daN	4329.46 daN
Static tipping load with bucket - Straight with cab	4828 lb	2190 kg
Static tipping load with bucket - Full turn with cab	3732 lb	1693 kg
Static tipping load with pallet forks - Straight with cab	3411 lb	1547 kg
Weight and dimensions		
Unladen weight (with forks) with 4-post canopy	7470 lb	3388.30 kg
Overall length to carriage (with hitch)	13 ft 9 in	4.18 m
Wheelbase	5 ft 9 in	1.74 m
Overall width of 4 posts canopy	4 ft	1.23 m
Overall cab width	4 ft	1.22 m
Overall height with 4 posts canopy	7 ft 7 in	2.31 m
Overall height with cab	7 ft 7 in	2.31 m
Tilt-up angle	39.90 °	39.90 °
Tilt-down angle	44.70 °	44.70 °
External turning radius (over tyres)	10 ft 6 in	3.20 m
Articulation angle	45 °	45 °
Overall width less bucket	4 ft 10 in	1.47 m
Ground clearance	10 in	0.25 m
Performances		
Crowd	2.52 s	2.52 s
Dump	1.85 s	1.85 s
Engine		
Engine brand	Deutz	Deutz
Engine model	TD 2.2 L3	TD 2.2 L3
Engine norm	Stage V / Tier 4 Final	Stage V / Tier 4 Final
Number of cylinders / Capacity of cylinders	3 - 21 in³	3 - 337.82 cm³
I.C. Engine power rating / Power (kW)	60 Hp / 45 kW	60 Hp / 45.50 kW
Max. torque / Engine rotation	148 ft/lbs / 2400 rpm	200 Nm / 2400 rpm
Engine cooling system	2 water radiators + hydraulic oil	2 water radiators + hydraulic oil
Transmission		
Transmission type	Hydrostatic	Hydrostatic
Number of gears (forward / reverse)	2 / 2	2 / 2
Max. travel speed (may vary according to applicable regulations)	18 mi/h	28.32 km/h
Differential lock	Front and rear locking of the machine	Front and rear locking of the machine
Parking brake	Manual	Manual
Hydraulics		
Hydraulic pump type	Gear pump	Gear pump
Hydraulic flow - Pressure	15 US gpm / 3046 PSI	58.30 l/min / 210 bar
High-Flow Option (l/min)	19 US gpm	72.30 l/min
Drive hydraulic system pressure	6092 PSI	420 bar
Tank capacities		
Hydraulic oil	12 US gal	45 l
Fuel tank	22 US gal	82.50 l
Miscellaneous		
Safety cab homologation	Cabin ROPS - FOPS Level 1	Cabin ROPS - FOPS Level 1

Pound-for-pound packed with power, the AL550 and its Z-kinematic loader arm features unmatched break-out forces to take on the toughest challenges. Small yet powerful, this machine's responsive hand throttle and 2-speed hydrostatic transmission get you to the task at hand with speeds up to 18 MPH, and its front and rear differential locks ensure you have traction exactly when and where you need it. In other words, this machine is like you—ready to get the job done.



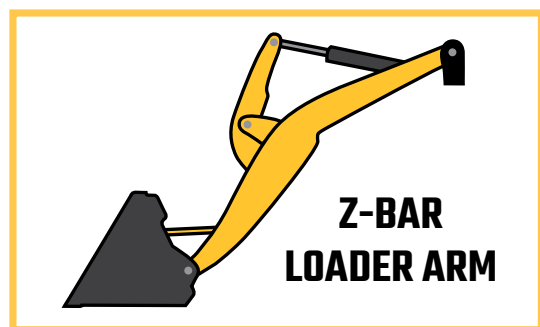
10'4"
MAX HEIGHT
[AT BUCKET PIVOT POINT]

9.8"
GROUND CLEARANCE

17.4 mph
MAXIMUM SPEED



AL650



A reliable machine to work like you, the AL650 combines reduced dimensions with true power. Slip in and out of that manure pile with ease, in even the tightest spaces. All controls are centralized around the joystick and on the floating armrest. With full 360° visibility, an adjustable workspace and ergonomic controls, this comfort allows you to work as hard as you do, sun up to sun down.

10' 3"
MAX. LIFTING HEIGHT
[BELOW FORKS]

10' 10"
EXTERNAL TURNING RADIUS

6744 lbs
STATIC TIPPING LOAD
[WITH BUCKET STRAIGHT]

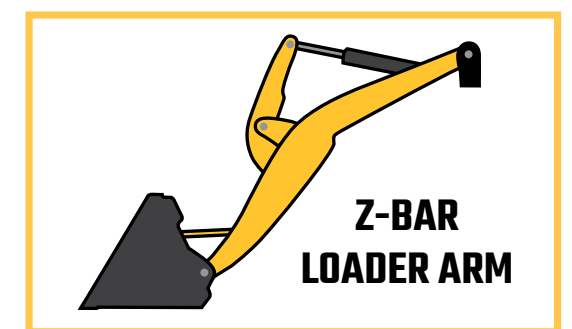
Capacities	Imperial	Metric
Max. height of bucket pivot point	10 ft 11 in	3.32 m
Max. lifting height (below forks)	10 ft 3 in	3.13 m
Breakout force with bucket	5743 daN	5743 daN
Static tipping load with bucket - Straight with cab	6744 lb	3059 kg
Static tipping load with bucket - Full turn with 4-post canopy	4916 lb	2230 kg
Static tipping load with bucket - Full turn with cab	5245 lb	2379 kg
Static tipping load with pallet forks - Straight with cab	5302 lb	2405 kg
Static tipping load with pallet forks - Straight with 4-post canopy	4980 lb	2259 kg
Static tipping load with pallet forks - Full turn with 4-post canopy	3920 lb	1778 kg
Static tipping load with bucket - Straight with 4-post canopy	6409 lb	2907 kg
Weight and dimensions		
Unladen weight (with forks) with 4-post canopy	9149 lb	4150 kg
Unladen weight (with forks)	9500 lb	4309 kg
Wheelbase	79 in	2007 mm
Overall width of 4 posts canopy	4 ft 6 in	1.37 m
Overall cab width	4 ft 6 in	1.37 m
Overall height with 4 posts canopy	8 ft 1 in	2.47 m
Overall height with cab	8 ft 1 in	2.47 m
Tilt-up angle	45 °	45 °
Tilt-down angle	45 °	45 °
External turning radius (over tyres)	10 ft 10 in	3.31 m
Articulation angle	45 °	45 °
Overall width less bucket	5 ft 5 in	1.65 m
Overall length - Less Bucket	14 ft	4.26 m
Ground clearance	1 ft 3 in	0.37 m
Engine		
Engine brand	Yanmar	Yanmar
Engine model	4TNV98CT	4TNV98CT
Engine norm	Tier 4 final	Tier 4 final
Number of cylinders / Capacity of cylinders	4 - 201 in ³	4 - 3300 cm ³
I.C. Engine power rating / Power (kW)	64.40 Hp / 48 kW	64.40 Hp / 48 kW
Max. torque / Engine rotation	207 ft/lbs / 2300 rpm	280 Nm / 2300 rpm
Engine cooling system	2 water radiators + hydraulic oil	2 water radiators + hydraulic oil
Transmission		
Transmission type	Hydrostatic	Hydrostatic
Number of gears (forward / reverse)	2 / 2	2 / 2
Max. travel speed (may vary according to applicable regulations)	19 mi/h	30 km/h
Travel speed (laden)	19 mi/h	30 km/h
Differential lock	Front and rear locking of the machine	Front and rear locking of the machine
Parking brake	Manual	Manual
Hydraulics		
Hydraulic pump type	Gear pump	Gear pump
Hydraulic flow - Pressure	18 US gpm / 2901 PSI	69.50 l/min / 200 bar
High-Flow Option (l/min)	26 US gpm	97 l/min
Drive hydraulic system pressure	6092 PSI	420 bar
Tank capacities		
Hydraulic oil	19 US gal	73.80 l
Fuel tank	25 US gal	95 l
Noise and vibration		
Vibration to whole hand/arm	< 2.50 m/s ²	< 2.50 m/s ²
Miscellaneous		
Safety cab homologation	Cabin ROPS - FOPS Level 1	Cabin ROPS - FOPS Level 1



AL750

Capacities	Imperial	Metric
Max. height of bucket pivot point	11 ft 5 in	3.47 m
Max. lifting height (below forks)	10 ft 9 in	3.28 m
Breakout force with bucket	5906 daN	5906 daN
Static tipping load with bucket - Straight with cab	7908 lb	3587 kg
Static tipping load with bucket - Full turn with 4-post canopy	5778 lb	2621 kg
Static tipping load with bucket - Full turn with cab	6127 lb	2779 kg
Static tipping load with pallet forks - Straight with cab	6354 lb	2882 kg
Static tipping load with pallet forks - Straight with 4-post canopy	6043 lb	2741 kg
Static tipping load with pallet forks - Full turn with 4-post canopy	4793 lb	2174 kg
Static tipping load with bucket - Straight with 4-post canopy	7447 lb	3378 kg
Weight and dimensions		
Unladen weight (with forks) with 4-post canopy	10540 lb	4781 kg
Unladen weight (with forks)	10919 lb	4953 kg
Wheelbase	6 ft 9 in	2.06 m
Overall width of 4 posts canopy	4 ft 9 in	1.45 m
Overall cab width	4 ft 9 in	1.45 m
Overall height with 4 posts canopy	8 ft 2 in	2.48 m
Overall height with cab	8 ft 2 in	2.48 m
Tilt-up angle	45°	45°
Tilt-down angle	45°	45°
External turning radius (over tyres)	11 ft 2 in	3.41 m
Articulation angle	45°	45°
Overall width less bucket	5 ft 9 in	1.74 m
Overall length - Less Bucket	14 ft 7 in	4.44 m
Ground clearance	1 ft	0.31 m
Engine		
Engine brand	Deutz	Deutz
Engine model	TD 3.6 L4	TD 3.6 L4
Engine norm	Tier 4 final	Tier 4 final
Number of cylinders / Capacity of cylinders	4 - 220 in ³	4 - 3600 cm ³
I.C. Engine power rating / Power (kW)	74.30 Hp / 55 kW	74.30 Hp / 55 kW
Max. torque / Engine rotation	243 ft/lbs / 2300 rpm	330 Nm / 2300 rpm
Engine cooling system	2 water radiators + hydraulic oil	2 water radiators + hydraulic oil
Transmission		
Transmission type	Hydrostatic	Hydrostatic
Number of gears (forward / reverse)	2 / 2	2 / 2
Max. travel speed (may vary according to applicable regulations)	19 mi/h	30 km/h
Travel speed (laden)	19 mi/h	30 km/h
Differential lock	Front and rear locking of the machine	Front and rear locking of the machine
Parking brake	Manual	Manual
Hydraulics		
Hydraulic pump type	Gear pump	Gear pump
Hydraulic flow - Pressure	18 US gpm / 2901 PSI	69.50 l/min / 200 bar
High-Flow Option (l/min)	30 US gpm	114.30 l/min
Drive hydraulic system pressure	5511 PSI	380 bar
Tank capacities		
Hydraulic oil	19 US gal	73.80 l
Fuel tank	27 US gal	102 l
Noise and vibration		
Vibration to whole hand/arm	< 2.50 m/s ²	< 2.50 m/s ²
Miscellaneous		
Safety cab homologation	Cabin ROPS - FOPS Level 1	Cabin ROPS - FOPS Level 1

Largest Articulated Loader in the GEHL lineup with a standard lift arm, this mighty machine will fight through the work day as hard as you. With a hydrostatic transmission and Z-Kinematic lift arm, you'll bring the extra break-out force and power to the jobsite. Great for agricultural or construction sites, this beast will keep you moving toward a job well-done in half the time.



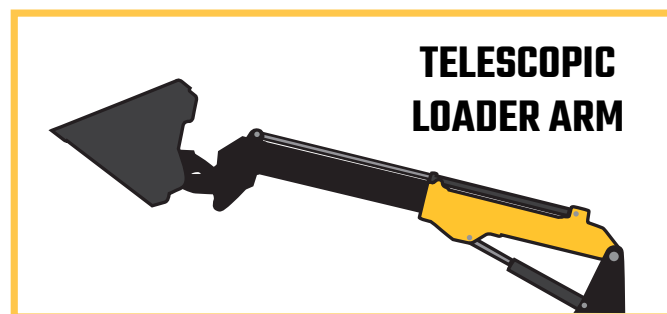
10' 9"
MAX LIFTING HEIGHT
[BELOW FORKS]

10919 lbs
UNLADEN WEIGHT
[WITH FORKS]

19 mph
MAXIMUM SPEED



ALT750



Love your GEHL ALT750 but need that extra reach to get the job done? The ALT750 pushes your lift to new boundaries with its telescopic boom on an already agile chassis. The hydrostatic transmission gives you smooth, reliable power to get the job done. True 360° visibility allows GEHL to stay true to what's most important – keeping you safe. Stay comfortable all day long in a fully adjustable operator station that helps you work hard, all day long.

4012 lbs
 STATIC TIPPING LOAD
 [FULL TURN WITH BUCKET]

1'
 GROUND CLEARANCE

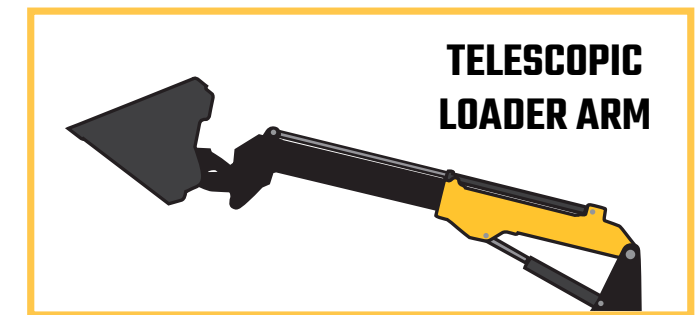
Capacities	Imperial	Metric
Static tipping load with bucket (straight)	7714 lb	3499 kg
Static tipping load with bucket (full turn)	4012 lb	1820 kg
Max. payload with forks as per EN 474-3 (80%)	3527 lb	1600 kg
Max. height of bucket pivot point	16 ft 6 in	5.03 m
Max. lifting height (below forks)	15 ft 11 in	4.84 m
Max. outreach	10 ft 10 in	3.30 m
Breakout force with bucket	4990 kgF	4990 kgF
Static tipping load with bucket (retracted)	7714 lb	3499 kg
Static tipping load with bucket (extended)	4012 lb	1820 kg
Bucket hinge pin height (retracted)	154 in	3911 mm
Bucket hinge pin height (extended)	198 in	5036 mm
Weight and dimensions		
Unladen weight (with forks) with 4-post canopy	12300 lb	5579 kg
Overall cab width	4 ft 2 in	1.28 m
Overall height with 4 posts canopy	8 ft 2 in	2.48 m
External turning radius (over tyres)	13 ft 3 in	4.03 m
Articulation angle	40 °	40 °
Overall width less bucket	6 ft 5 in	1.96 m
Overall length - Less Bucket	18 ft 10 in	5.73 m
Standard tyres	405/70-20	405/70-20
Ground clearance	1 ft	0.31 m
Engine		
Engine brand	Deutz	Deutz
Engine model	TD 3.6 L4	TD 3.6 L4
Engine norm	Tier 4 final	Tier 4 final
Number of cylinders / Capacity of cylinders	4 - 220 in ³	4 - 3600 cm ³
I.C. Engine power rating / Power (kW)	74.30 Hp / 55 kW	74.30 Hp / 55 kW
Max. torque / Engine rotation	243 ft/lbs / 2300 rpm	330 Nm / 2300 rpm
Engine cooling system	2 water radiators + hydraulic oil	2 water radiators + hydraulic oil
Transmission		
Transmission type	Hydrostatic	Hydrostatic
Number of gears (forward / reverse)	2 / 2	2 / 2
Max. travel speed (may vary according to applicable regulations)	19 mi/h	30 km/h
Travel speed (laden)	12 mi/h	20 km/h
Differential lock	Front and rear locking of the machine	Front and rear locking of the machine
Parking brake	Manual	Manual
Hydraulics		
Hydraulic pump type	Gear pump	Gear pump
Hydraulic flow - Pressure	18 US gpm / 5511 PSI	70 l/min / 380 bar
High-Flow Option (l/min)	29 US gpm	110 l/min
Drive hydraulic system pressure	5511 PSI	380 bar
Tank capacities		
Hydraulic oil	19 US gal	73.70 l
Fuel tank	30 US gal	115 l
Noise and vibration		
Vibration to whole hand/arm	< 2.50 m/s ²	< 2.50 m/s ²
Miscellaneous		
Safety cab homologation	Cabin ROPS - FOPS Level 1	Cabin ROPS - FOPS Level 1



ALT950

Capacities	Imperial	Metric
Static tipping load with forks (straight)	10975 lb	4978 kg
Static tipping load with forks (full turn)	9143 lb	4147 kg
Max. payload with forks as per EN 474-3 (80%)	7275 lb	3300 kg
Max. lifting height (below forks)	17 ft 1 in	5.20 m
Max. outreach	10 ft 10 in	3.30 m
Reach at max. height	3 ft 11 in	1.20 m
Breakout force with bucket	6730 daN	6730 daN
Static tipping load with pallet forks - Straight with cab	10975 lb	4978 kg
Weight and dimensions		
Unladen weight (with forks)	18717 lb	8490 kg
Overall length to carriage (with hitch)	18 ft 9 in	5.72 m
Wheelbase	8 ft 2 in	2.50 m
Overall height with cab	8 ft 10 in	2.70 m
Tilt-up angle	9 °	9 °
Tilt-down angle	156 °	156 °
External turning radius (over tyres)	13 ft 9 in	4.20 m
Articulation angle	44 °	44 °
Overall width less bucket	7 ft 6 in	2.29 m
Overall length - Less Bucket	18 ft 9 in	5.72 m
Standard tyres	Alliance - A580 - 460/70 R24 159A8	Alliance - A580 - 460/70 R24 159A8
Ground clearance	1 ft 3 in	0.39 m
Performances		
Crowd	3.50 s	3.50 s
Dump	2.70 s	2.70 s
Engine		
Engine brand	Deutz	Deutz
Engine model	TCD 4.1 L4	TCD 4.1 L4
Engine norm	Tier 4	Tier 4
Number of cylinders / Capacity of cylinders	4 - 246 in ³	4 - 4038 cm ³
I.C. Engine power rating / Power (kW)	143 Hp / 105 kW	143 Hp / 105 kW
Max. torque / Engine rotation	406 ft/lbs / 2300 rpm	550 Nm / 2300 rpm
Engine cooling system	3 water radiators + air + hydraulic oil	3 water radiators + air + hydraulic oil
Transmission		
Transmission type	M-Varioshift	M-Varioshift
Max. travel speed (may vary according to applicable regulations)	25 mi/h	40 km/h
Travel speed (laden)	25 mi/h	40 km/h
Differential lock	Limited slip differential on front and rear axles	Limited slip differential on front and rear axles
Parking brake	Manual	Manual
Hydraulics		
Hydraulic pump type	Variable displacement pump	Variable displacement pump
Hydraulic flow - Pressure	42 US gpm / 3916 PSI	158 l/min / 270 bar
Tank capacities		
Hydraulic oil	40 US gal	150 l
Fuel tank	40 US gal	150 l
Diesel Exhaust fluid (AdBlue® type)	3 US gal	10 l
Noise and vibration		
Noise at driving position (LpA) tested following NF EN 12053 norm	72 dB	72 dB
Noise to environment (LwA)	107 dB	107 dB
Vibration to whole hand/arm	< 2.52 m/s ²	< 2.52 m/s ²
Miscellaneous		
Safety cab homologation	Cabin ROPS - FOPS Level 2	Cabin ROPS - FOPS Level 2

A whole new animal! Reach new heights with the latest Telescopic Articulated Loader in our lineup. The all new ALT950 has all the lift and reach you need to get the toughest job done. With unsurpassed visibility and ease of operation, you'll be glad you chose GEHL. The GEHL ALT950 Telescopic Articulated Loader features simple-to-use controls at your finger tips, while also positioning the operator above the load for safe operation and excellent view of the dirtiest job.



**TELESCOPIC
LOADER ARM**

18' 9"
OVERALL LENGTH TO CARRIAGE

3' 11"
REACH AT MAX HEIGHT

MAXIMIZE YOUR MACHINE



Scan with your phone to learn more and see a video overview.

EQUIPMENT TRACKING

Know where your machines are at all times, check fuel levels, run time, downtime, stay on top of any problems and minimize downtime with the My GEHL app and your connected machines. Automatic notifications are included and designed to give you the important information you need immediately to increase your productivity and ensure your GEHL machine WORKS LIKE YOU..

PREDICTIVE ANALYTICS

When running multiple tasks or job sites routine machine upkeep can be forgotten about. Not anymore! Set notifications to alert you of upcoming needed maintenance and repairs. Stay on top of problems before the problem becomes real and hits your profit margin.

A TRUE PARTNER

With the network of GEHL partners by your side, you can work in complete confidence and count on high-level support and practical help at any moment. Monitoring of machine events enables you to implement corrective actions and optimize your up-time while also helping you understand your total cost of ownership. If the machine is sold, you can also pass on its "ID card" to the new owner as a gesture of transparency.

STAY CONNECTED NO MATTER WHERE YOU ARE

Connected Machine

Connected Machines provide instant remote access to recent activity, operation codes, CAN data and service alerts. With data management software, end-users and owners can be more proactive with machine maintenance and benefit from additional security features such as GEO fencing and access keypads.



FULL SUPPORT

ALL NEW GEHL.COM



Manitou Group is here to help support and service the machines you love after purchase. From Financing, Warranties, Maintenance and more, we are dedicated to support the end customer. Whether you're in agriculture or construction, Manitou Group provides machines, attachments and services adapted to your daily needs. Our goal is to make your life easier! See what you can accomplish with your new GEHL and keep your peace of mind with Manitou Group services and solutions.

CHECK OUT THE NEW [GEHL.COM](https://www.gehl.com)

- SHOP MACHINES
- COMPARE MODELS
- FIND A DEALER
- LOCATE SUPPORT
- WORKING PHOTOS/VIDEOS

Also linked to our social media pages allowing you to join the conversation with other GEHL machine enthusiasts.



FROM YOUR COMPUTER
OR YOUR PHONE!

MANITOU GROUP ATTACHMENTS

MANITOU GROUP PARTS

MANITOU GROUP FINANCE

GEHL[®]

WORKS LIKE YOU[™]

GEHL.COM



Manitou Equipment America, LLC

P.O. Box 179



One GEHL Way



West Bend, WI, USA 53095



P: (262) 334-9461

F: (262) 338-7517

Manitou Group reminds users to read and understand the operator's manual before operating any equipment. Also, make sure all safety devices and shields are in place and functioning properly. Manitou Group reserves the right to add improvements or make changes in specifications at any time without notice or obligation.

© 2026 Manitou Equipment America, LLC. All registered and unregistered marks are owned by Manitou Equipment America, LLC or its affiliates. All rights reserved.

® denotes registration in the United States. Trademarks may or may not be registered in other countries.